



# Carbon footprint report

*By Dene Healthcare*

Green Cross Group Practice Statement



01 Jan 21 to 31 Dec 21

## Our Climate Commitment – UNFCCC Race to Zero

At Green Cross Group Practice we are concerned about and recognise the importance and urgency of addressing climate change and the serious risks that climate change poses for present and future generations.

With our signatures, we agree to take the following actions:

1. We acknowledge the climate crisis as a health crisis and an emergency.
2. We will act now by taking steps to reduce greenhouse gas emissions to Net Zero as soon as feasible.
3. We are stronger together and will work with others – our staff, patients, healthcare colleagues and local communities – to create new solutions

Green Cross Group Practice recognises that climate change poses a threat to our health, the economy, nature and society-at-large. The NHS contributes to 4-5 % of the UK's greenhouse gases and has set a target of being the worlds first net zero healthcare service, by 2045. Our practice commits to take action immediately in order to:

- Halve our greenhouse gas emissions before 2030
- Achieve net zero emissions before 2050
- Disclose our progress on a yearly basis

In doing so, we are proud to be recognised by the United Nations Race to Zero campaign, and join governments, businesses, cities, regions, and universities around the world that share the same mission. We acknowledge that our commitment will be reported on the SME Climate Hub website. Green Cross Group Practice made our pledge to the Race to Zero on 1/12/21.



### Green Cross Net-Zero Strategy

Green Cross Group Practice have 2 GP surgeries in North Sheffield. We recognise that environmental sustainability will play a key role within our planning and values and have developed the following net-zero strategy.

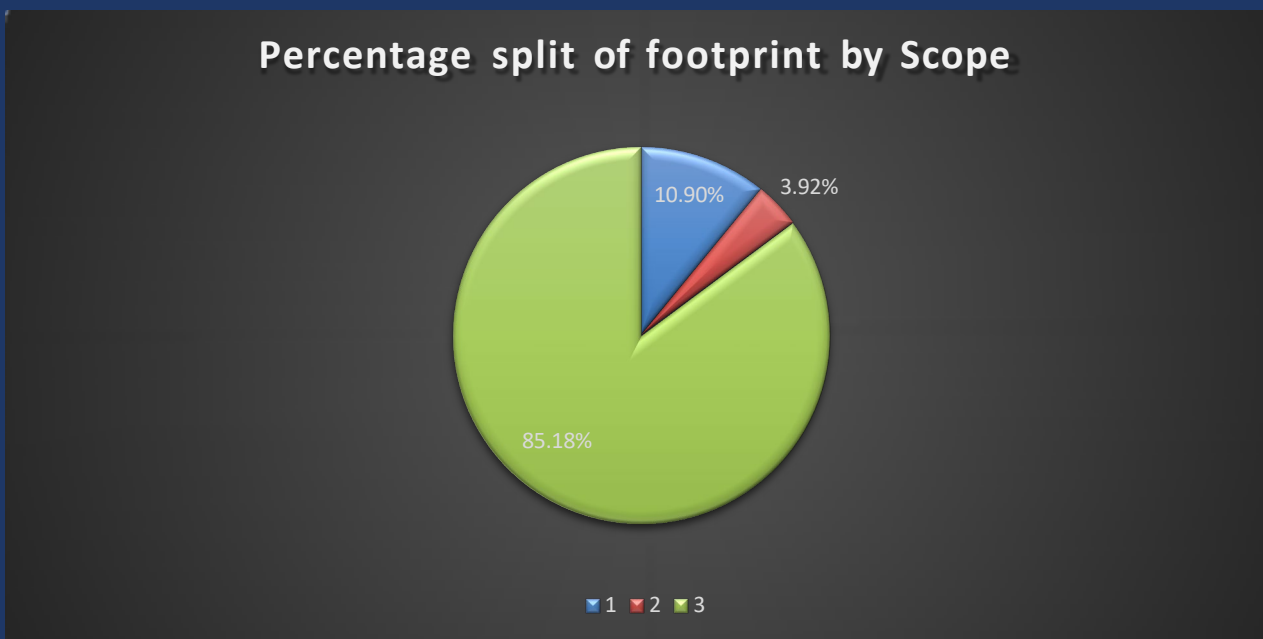
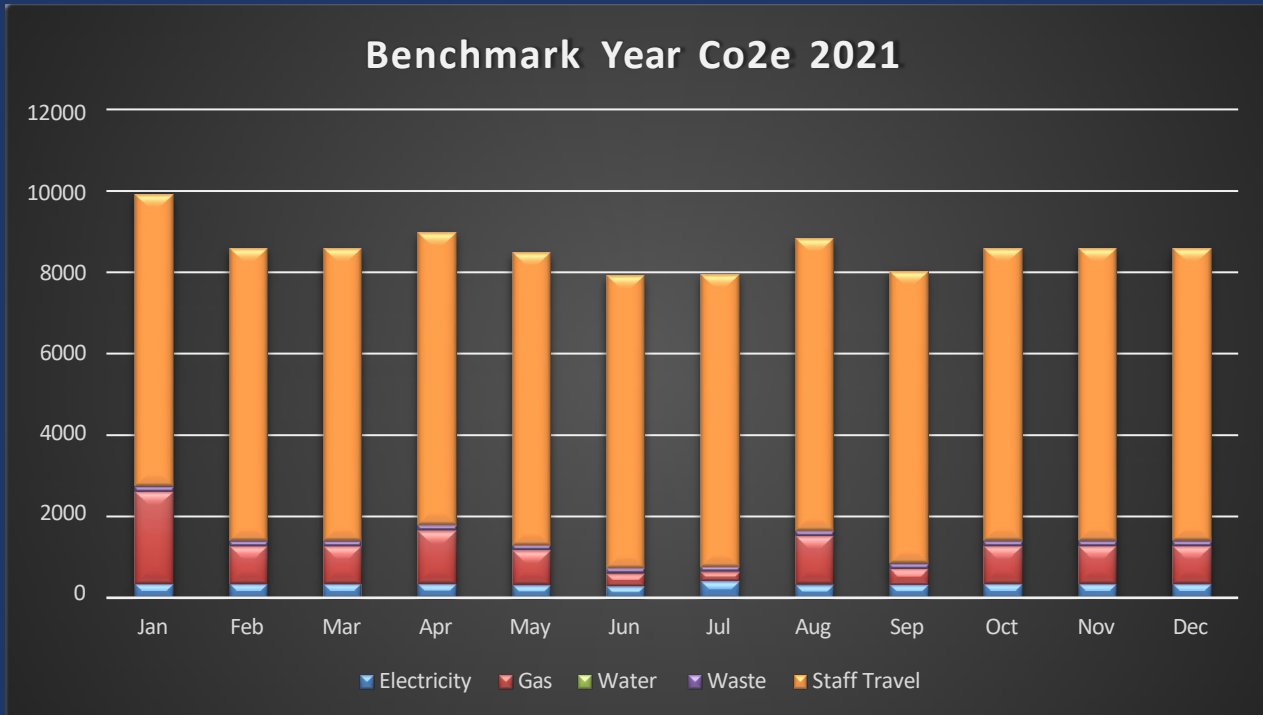
Green Cross plan to implement several measures over the coming years to support our net-zero ambition, reduce our environmental impact and support our staff and patients. We understand that our associated carbon emissions do not stop with our organisational footprint and our longer-term ambition is to understand, reduce and engage across all our impacts.

We are starting to calculate our organisational impact, Scope 1,2 and some Scope 3 emissions in partnership with Dene Healthcare. In doing so we recognise our main carbon emissions as a service business are across two factors, Energy and Commuting.



## Carbon footprint report for Green Cross Group Practice

Green Cross emitted 102785 kgCO<sub>2</sub>e (Kilogrammes of carbon dioxide equivalent) for 2020/21 (across scope 1,2 and 3). This can be presented as 102 tCO<sub>2</sub>e (tonnes of carbon dioxide equivalent) with an intensity indicator of 411 kgCO<sub>2</sub>e per total full-time equivalent employee (FTE).



The main emitting areas for Green Cross are commuting and energy making up 89% of recorded emissions.

Additional understanding of our scope 3 emissions will be recorded in further reports.

# Carbon footprint report for Green Cross Group Practice

---



4111.38  
KgCo2e

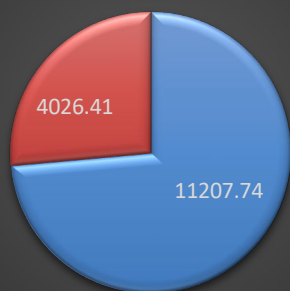


37.43  
kgCo2e

Green Cross will present our carbon emissions using both a total carbon amount (tCo2e), along with the following two intensity indicators, per employee and m2 office space.

---

## Energy & Fuels 15234 KgCo2e



■ Gas ■ Electricity

Electricity and gas was calculated using a calculation based on the usage across both of our surgeries. We have detailed some of the actions we are going to take to try and reduce our emissions on page 2.

---

## Staff Commuting



■ Bike ■ Bus ■ Car

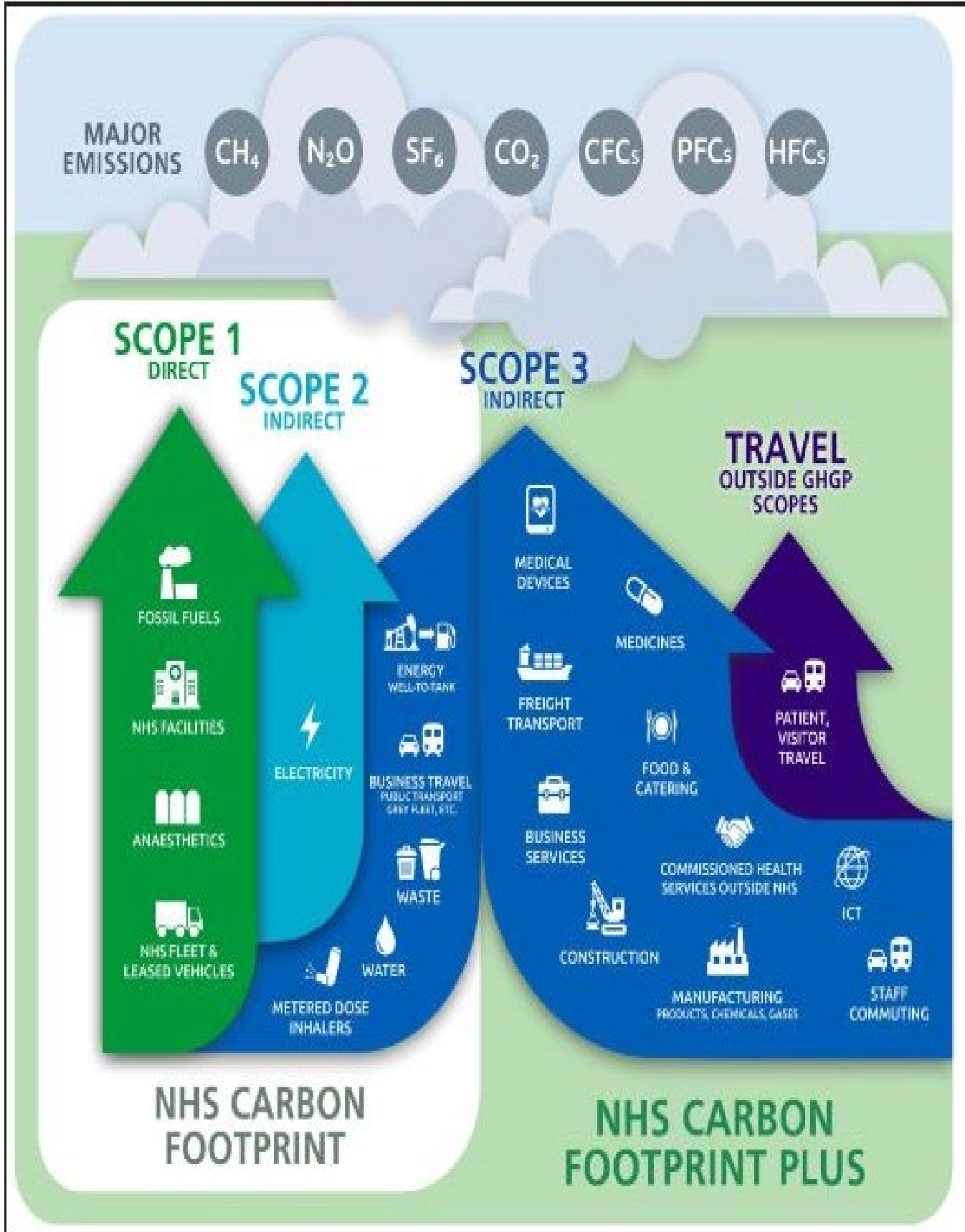
Staff commuting impact is a big proportion 71% of emissions and essential to provide services to our patients.

We have begun to look at systems and processes to encourage further sustainable commuting to the office.

We are going to apply to Greener NHS for funding for an active travel promotion project.

---

What is included in your carbon footprint for Scope 1-2-3?



### **Detail Actions to take:**

- Introduce a new electrical policy where all staff are encouraged to turn off their computer, lights and other electrical equipment when they have finished using them.
  - Install plug timers to each room which automatically switch off power overnight.
  - Investigate the cost of a Hive style thermostat at Dunninc surgery so that the heating is not on unnecessarily.
  - Introduce a new heating policy where staff that are locking up the surgery at night ensure that the heating is set to the correct temperature.
  - Switch all light bulbs at Dunninc surgery to LEDs.
  - Investigate the cost of switching consumables to recycled/sustainable products.
  - Complete a waste audit to categorise types of waste and volume.
  - Review Energy contract when renewal is due (2025 and 2026 respectively).
-

### **Methodology:**

- Green Cross has adopted an operational control approach to establishing the boundary. The methodology adopted in line with the Greenhouse Gas Protocol<sup>1</sup> and the BEIS Environmental Reporting Guidelines<sup>2</sup>. The calculations were completed using the UK Government emissions factors<sup>4</sup>.
- CO<sub>2</sub>e is the universal unit of measurement to indicate the global warming potential (GWP) of Greenhouse Gases (GHGs), expressed in terms of the GWP of one unit of carbon dioxide. There are seven main GHGs that contribute to climate change, as covered by the Kyoto Protocol: carbon dioxide (CO<sub>2</sub>), methane (CH<sub>4</sub>), nitrous oxide (N<sub>2</sub>O), hydrofluorocarbons (HFCs), perfluorocarbons (PFCs), sulphur hexafluoride (SF<sub>6</sub>) and nitrogen trifluoride (NF<sub>3</sub>). Different activities emit different gases. Using CO<sub>2</sub>e allows all greenhouse gases to be measured on a like-for-like basis.

### **Estimations:**

- In creating our benchmark period for 2021. Green Cross has estimated office energy use based on part invoice data, estimations were also used to calculate water, waste and commuting via a staff survey.

### **Exclusions:**

- Excluded from our initial benchmark report are materials used and waste. These exclusions are due to data not being available for the calculations. New process and reporting will be added to include these elements in due course.

### **Conclusions:**

The main emitting areas for Green Cross are commuting and energy making up 89% of recorded emissions.

---